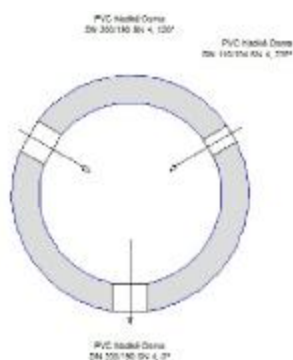
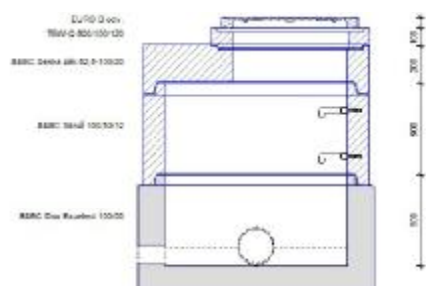


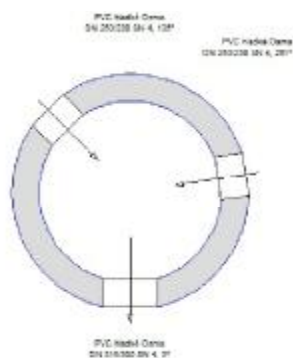
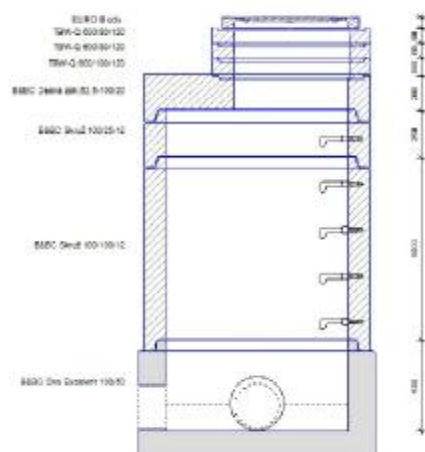
Sachta & S. DSO



žitia msa	[m s.m.]	200.0
žitia karnia	[m s.m.]	300.0
zemi kiti	[m]	5.2
plaukanti nat sparnai	[m]	0.1
gijta žuvis	[m]	0.9
zuvanti vėlis	[m]	5.8
žuvis	suma $n=222$	

888C Dire Resolent 100/100
 888C Dire 100/100/12
 888C Dire 24k 62.5-100/20
 TBAV-G 600-100/100
 EURD 8 sec.
 Dire 100 010 1000

Šachta č.1 DŠ1



total area	[m ² m]	299.23
solid surface	[m ² m]	301.67
total soil	(%)	4.88
glycerol and sodium	(%)	0.00
cylind. body	(%)	0.27
transverse cylind.	(%)	2.34
density	volumetric = 0.03 m	

G&C One Connect 100/50	1
G&C One 100/100/12	1
G&C One 100/25/12	1
G&C One 62.5/100/20	1
TSW-G 800/120/120	1
TSW-G 500/50/120	2
EURO II cam	1
Mercedes pro One 1000	1